

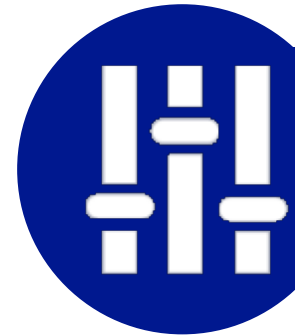
Understanding Windows Server 2012 Client Access Licenses (CALs)



CALs are required for users or devices that have **direct access** to the server.



- A Windows Server 2012 Client Access License is a license that gives users and devices the right to legally access a Windows Server.



CALs are cost-effective and **scalable**

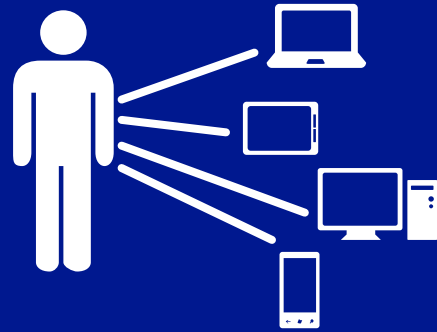
- Customers pay only for the Client licensing they need
- They can adapt their licensing needs by buying CALs as their businesses grow.



Types of Windows Server 2012 CALs



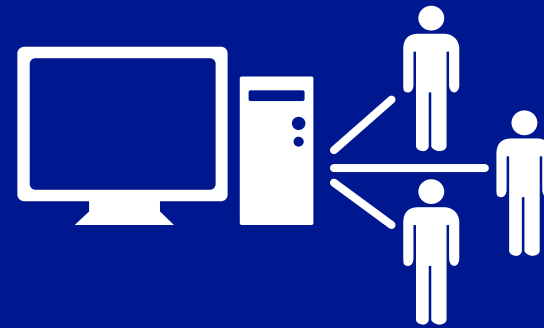
User CALs



Single user with unlimited devices

- Ideal for companies with employees who need to have roaming access to the corporate network using multiple devices, as well as from unknown devices.

Device CALs



Single device with unlimited users

- Ideal for companies with multiple users for one device, such as shift workers.

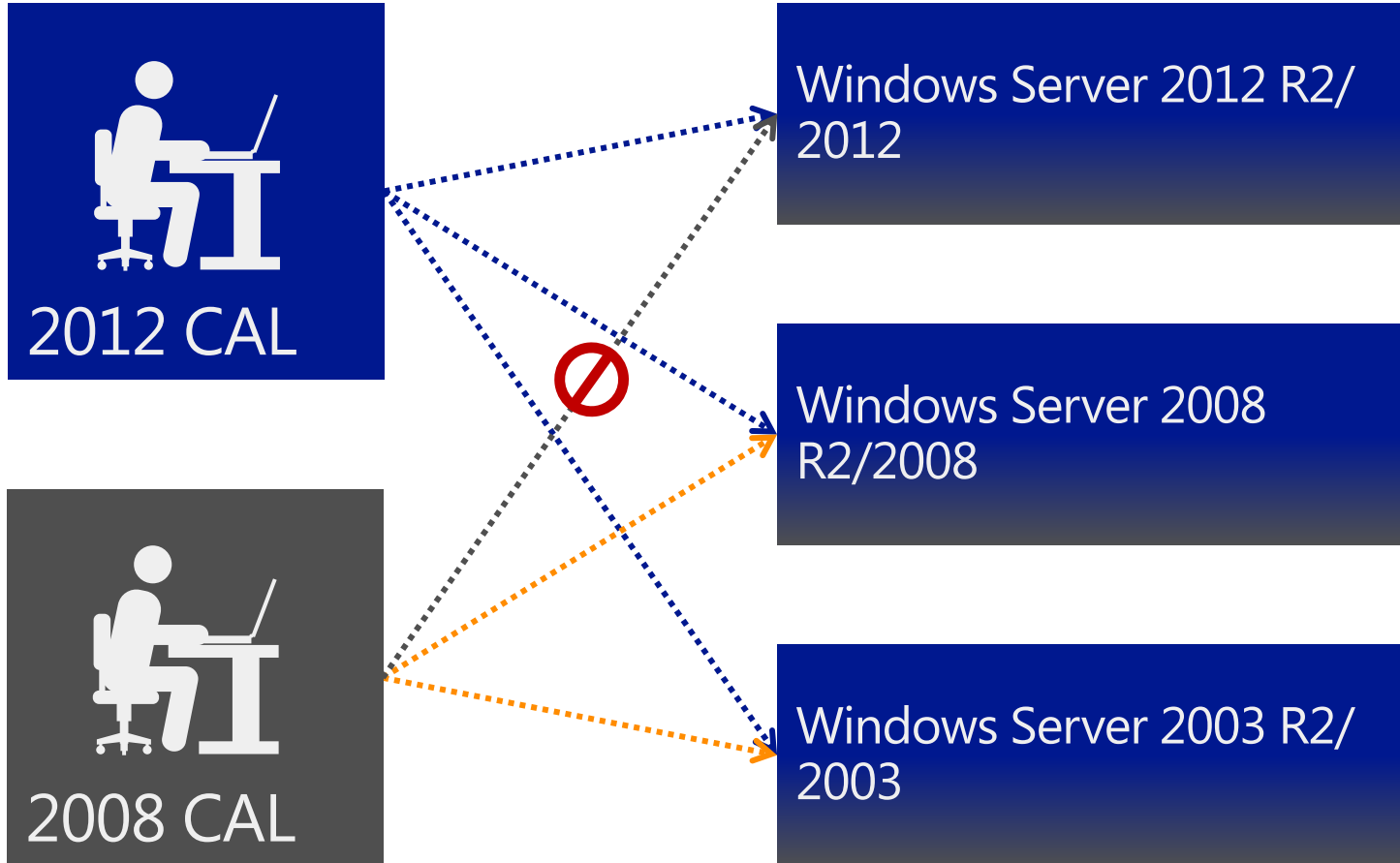
Which Windows Server 2012 R2 Editions Require CALs?



Product	CALs Required
Windows Server 2012 R2 Datacenter	✓
Windows Server 2012 R2 Standard	✓
Windows Server 2012 R2 Standard (4CPU/4VM)	✓
Windows Server 2012 R2 Essentials*	✗
Windows Server 2012 R2 Foundation*	✗

Windows Server CALs are not included as part of the OS license and must be purchased separately.

Windows Server 2012 CALs Are Version-Specific



CALs are required to access any virtual instance of **Windows Server 2012** and must be purchased separately.



- Windows Server 2012 CALs provide access to Windows Server 2012 or any **previous** version.
- CALs from any previous Windows Server version only work for that version or any previous version.
- When you upgrade to Windows Server 2012, you need to purchase new Windows Server 2012 CALs.
- CALs are not re-versioned when an R2 version ships. Windows Server 2012 CALs are the proper license for Windows Server 2012 R2 clients

Fast Facts About Windows Server 2012 CALs

CALs are no longer part of the OS server license as of the Windows Server 2012 launch in Fall 2012. They must be purchased separately.

Customers need to buy Windows Server CALs for users or devices that access the server.

CALs are used in conjunction with Microsoft server software licenses to allow users and devices to access and utilize the services of that server software.

No CAL is needed for unauthenticated access through the Internet.

Device and user CALs, as well as Remote Desktop Services (RDS) devices and user CALs, can be used on the same server.

CALs are version-specific and may be used to access the corresponding version of Windows Server or any previous version.

